



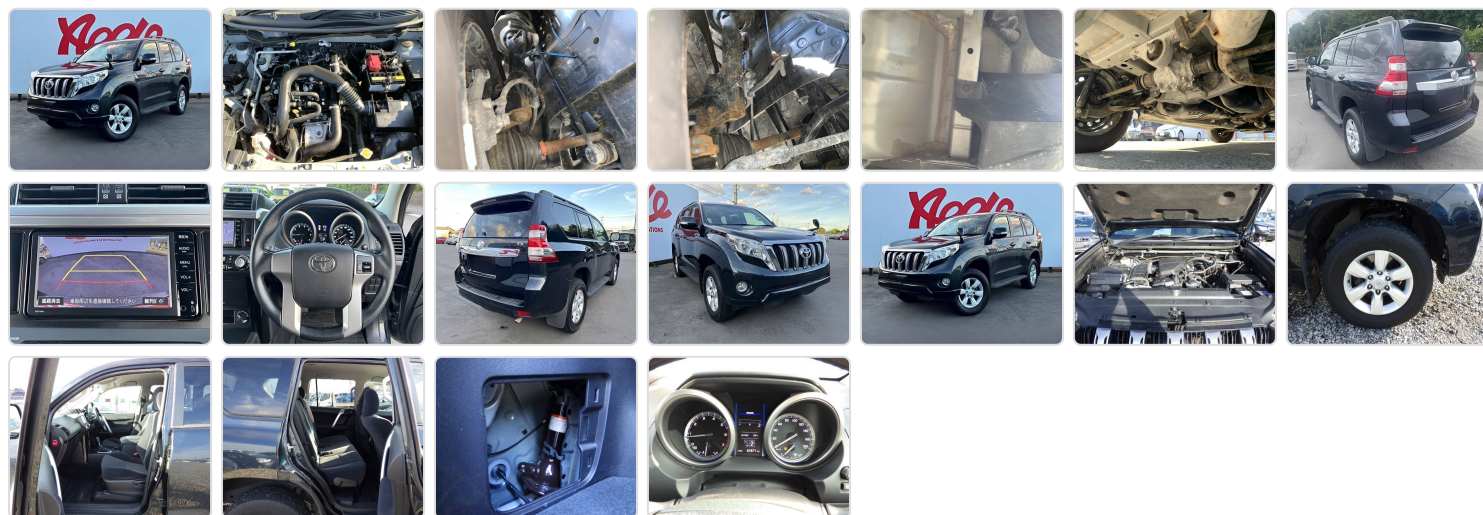
TOYOTA LAND CRUISER
Stock ID 470372

Registration Year: 2015
Manufacture Year: 2015

Vehicle Specifications

Model:	2TR	Chassis No:	TRJ150-0058***	Grade:	TX 7SEATS	Fuel:	Hybrid
Engine:	01248DR2	Drive Train:	4WD	Dimensions:	21 M ³	Shape:	SUV
Engine No:	2023	Transmission:	MT	Mileage:	83000	Capacity:	2,690cc
Ext. Color:	cs2	Weight (kg):	2,090 / 2,475	Seats:	5	Color:	cfgd1
Certification:	16330	Classification:	0066	Exterior:	4.5 points FRONT FOG LAMP ROOF RAIL SIDE STEP REAR SPOILER FACTORY 17inch ALLOY WHEEL	Interior:	4.5 points 7SEATS CAPACITY NAVIGATION BACK CAMERA STEERING SWITCH

Vehicle images



Vehicle Options

Pwr Steering	Yes	Pwr Wind		Pwr Mirrors		Center Lock	Yes	Air Cond	
Reverse Camera	Yes	Pwr Slide Door	Yes	Easy Closer	Yes	Cruise Control		ABS	Yes
Air Bag		Fog Lamps		HID Head Lamps	Yes	LED Head Lamps	Yes	Spare Key	Yes
Remote Key		Push Start	Yes	Seat Heater	Yes	Pwr Seat	Yes	Leather Seat	
Floor Mat	Yes	Sun Roof	Yes	Alloy Wheels	Yes	Grill Guard	Yes	Rear Wiper	Yes
Rear Spoiler	Yes	Stereo (FULL)	Yes	Navi/TV	Yes	CD Player	Yes	Car MD	
AUX	Yes	Spare Tire	Yes	Spare Tire Case	Yes	Puncture Repairing Kit	Yes	Tool	
Jack		Operators Manual		Maint. Record		360 Degree Camera		AM/FM Radio	
4WD		2WD		Back Tire		TV		Body Kit	

Side Skirts		Front Lip Spoiler		Turbo		Side Airbag		Wheel Spanner	
ESC		Keyless Entry		Front Airbags		Climate Control		Premium Lights	
Premium Wheels/Rims		Premium Paint		Racing Seats		Performance Tyres			